

# Fast Ethernet 8port Switch PoE WIS-SF800P

## Product Overview

The WIS-SF800P is the world first voltage-adjustable PoE switch, compatible with IEEE 802.3at. You can easily adjust the PoE output with 2VDC/24VDC/48VDC slide the small switch on the front panel, thus making it easy to power up different type PoE access point.

Tough Industrial Design



## Extremely Wide Voltage Scale

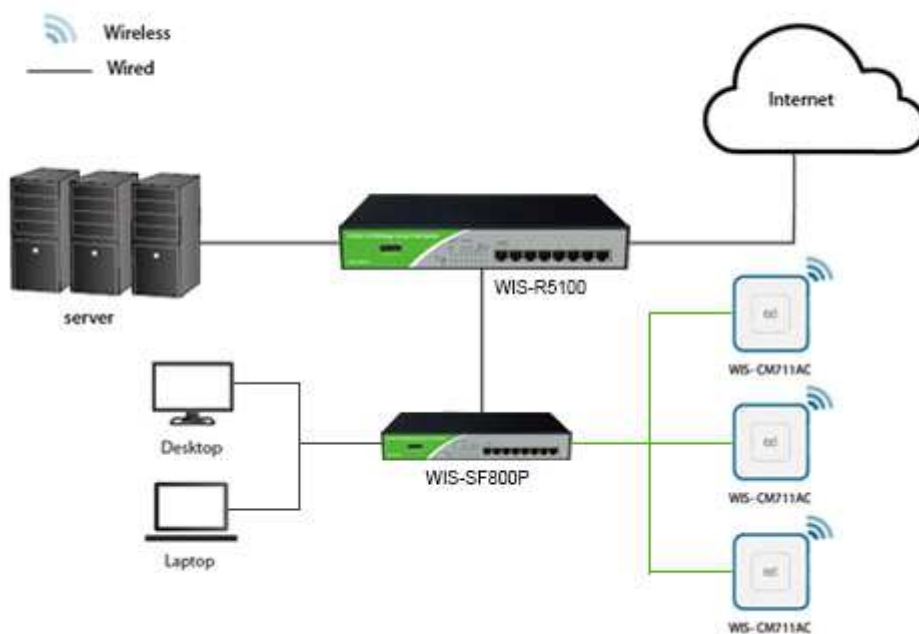
The WIS-SF800P provides 12V, 24V, 48V three different level voltage output for compatible with almost all PoE access point and cameras. From now on you can use just one model to solve all power over Ethernet requirement.

PoE Length v.s. Output Power

PoE Voltage	Maximum Power (W)	Output Power (W)			Remark
		25m	50m	100m	
12VDC	11.4	8.4	5.47	—	CAT5, CAT5E Ethernet Cable (100 meters with 12.5Ω Cable Resistance)
24VDC	22.8	19.8	17.1	11.5	
48VDC	28.8	27.6	26.5	24.3	

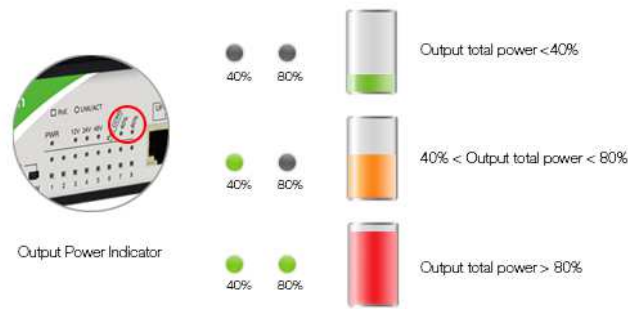
# Over Voltage Protection

What will happen if you improperly plug the 48V power to a 24V access point? WIS-SF800P can detect the right input voltage of currently connecting device. If a wrong PoE device detected, it automatically shuts down the related PoE port and all the PoE leds will be flashing as alert.



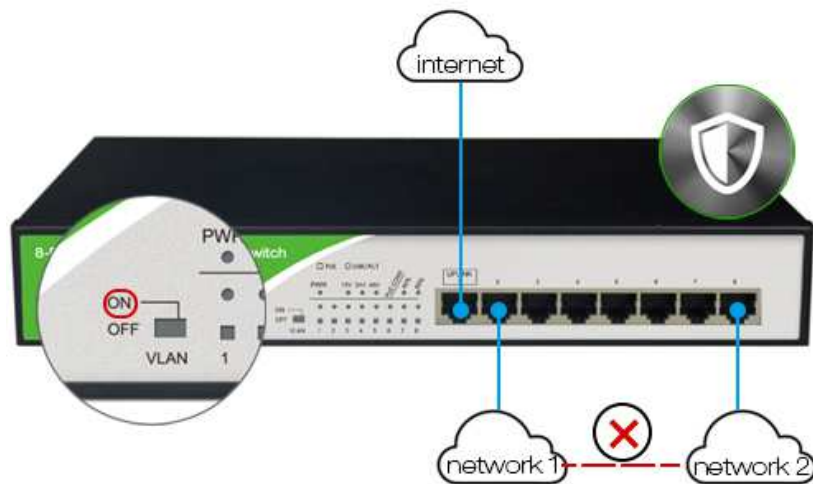
# Output Power Indicator

There are two leds indicating the power consumption status, which will let you roughly know that how many percentage of power has been used, helping the network planner whether it is possible to power up more access points or cameras.



# Hardware VLAN Feature

Turning on the VLAN switch on the front panel will isolate the data transmission of port 2~8, similar to client isolation feature in wireless access point. All those port can only pass the data to port 1 / uplink port, thus keeping a secure network and avoiding network broadcast storm.



## Physical Characteristics

Interface	8x 10/100Base-T Ethernet
PoE Ports	1~8
PoE Method	4/5 (+) 7/8 (-)
PoE Output	DC: 12/24/48V Adjustable
PoE Power	120W
VLAN	Controlled by On/Off Switch VLAN On, Port 2~8 isolation, Port 1 uplink VLAN off, Port 1-8 Interworking
Forward Type	Store and forward
Capacity	1.6G
MAC Table	2K
Jumbo Frame	2KB
Buffer	768Kbit
PPS	1.19Mpps
Input Voltage	AC 100-240V 50-60Hz
Working Temperature	0°C~40°C
Storage Temperature	-40°C~70°C
Working Humidity	10%~90% RH non-condensing
Storage Humidity	5%~90% RH non-condensing
Dimension	280*179*45mm
Weight	1.5kg
LED	PWR、Voltage、PoE CONS、LNK/ACT、PoE
Cable	10BASE-T : Cat 3、4、5 UTP (≤100m) 100BASE-TX : Cat 5 and up UTP (≤100m)

More information:

[www.wisnetworks.com](http://www.wisnetworks.com)



## DECLARATION OF CONFORMITY

We, Importer/Distributor DOTMEDIA LTD

*KATEVASIAS & NTALIAS 18 AXARNAI, GREECE*

In accordance with the following Directives:

**EMC Directive 2004/108/EC, Low Voltage Directive 2006 /95/EC,  
R&TTE Directive 1999/5/EC**

The product is compatible with the following norms/standards

<u>Applied Standards</u>	<u>Report No.</u>
Article 3.2 : Effective Use OF the Radio Spectrum ETSI EN 300 328 V1.7.1 (2006-10)	TEK-2013NT1213776R1 (07/01/2015)
Article 3.1b : Electromagnetic Compatibility ETSI EN 301 489-17 V2.2.1 (2012-09) ETSI EN301 489-1 V1.9.2 (2011-09)	NTEK-2013NT1213774E1 (07/01/2015)
Article 3.1a : Health and Safety ETSI EN 62311:2008 EN 60950-1:2006+A11:2009+A1:2010+A12:2011	NTEK-2013NT1213774H (07/01/2015) NTEK-2013NT1213776S (23/01/2015)

### Hereby we declare that:

Equipment	POE SWITCHES
Model number	SG900P / WIS-SF800P
Brand name	WISnetworks

*Is in conformity with the applicable requirements of the following documents*  
I hereby declare that the equipment named above has been designed to comply with the Relevant sections of the above referenced specifications. The unit complies with all Applicable Essential Requirements of the Directives

Place and date of issue

AXARNAI, 09/03/2018

Signature

DOTMEDIA ΕΜΠΟΡΙΑ ΑΝΑΛΟΓΙΜΩΝ ΕΙΔΩΝ  
& ΕΦΑΡΜΟΓΩΝ ΠΛΗΡΟΦΟΡΙΚΗΣ ΕΠΕ  
ΥΠΟΒΛΗΘΗΚΕ ΕΜΠΙΣΤΕΥΣΗ ΣΤΗΝ ΕΠΙΤΡΟΠΗ  
ΚΑΤΕΒΑΣΙΑΣ & ΝΤΑΛΙΑΣ ΑΧΑΡΝΕΙ Τ.Κ. 17671  
Α.Φ.Μ.: 999075747-Δ.Ο.Υ.: ΑΧΑΡΝΩΝ  
ΤΗΛ.: 210 2849836, 210 2840486, 210 2849419  
FAX: 210 2446835

(Theodoros Mavroeidis)