



SAFESCAN 155i / 155-S

SOFTWARE UPDATE INSTRUCTIONS

Part numbers 112-0401 / 112-0402 / 112-0465 / 112-0468 / 112-0529 / 112-0530

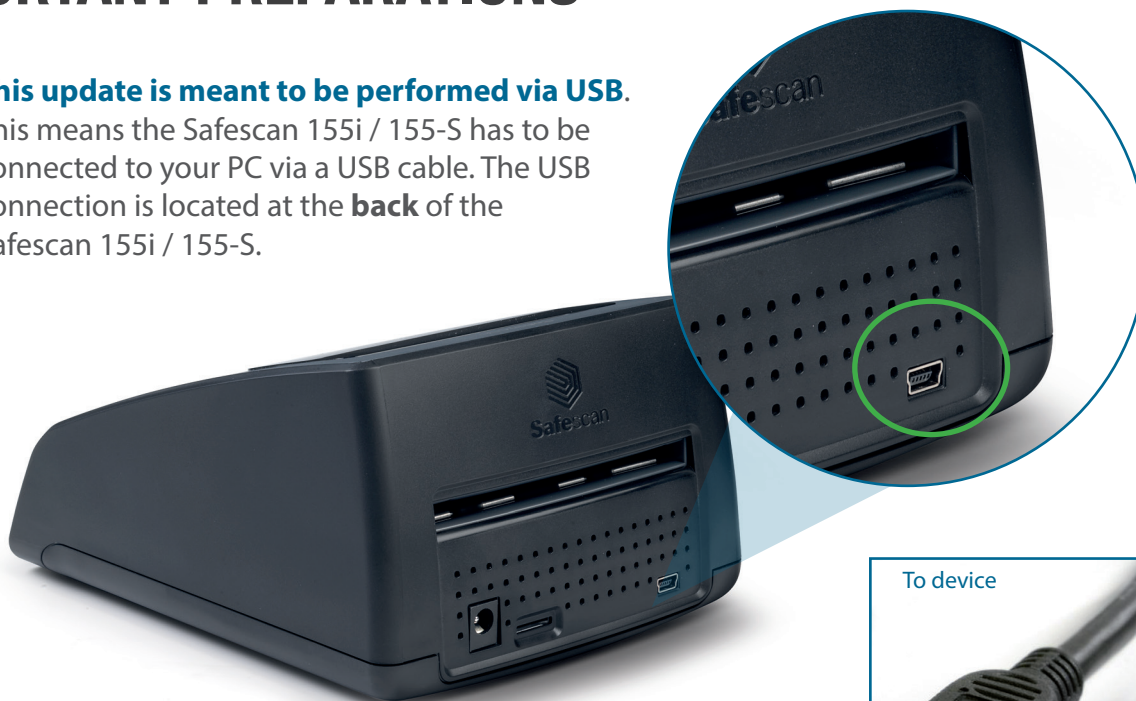
INTRODUCTION AND PRECAUTIONS

This instruction guides you through the software update procedure of your Safescan 155i / 155-S Counterfeit Detector. Please follow the instructions step by step to ensure a proper update of your machine.

IMPORTANT PREPARATIONS

1 This update is meant to be performed via USB.

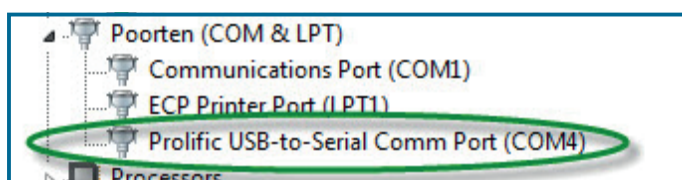
This means the Safescan 155i / 155-S has to be connected to your PC via a USB cable. The USB connection is located at the **back** of the Safescan 155i / 155-S.



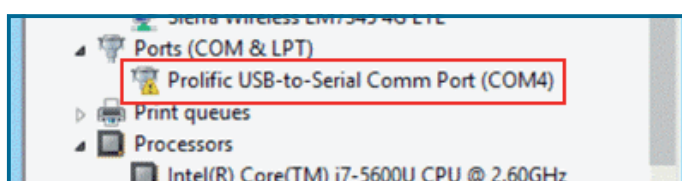
The USB cable to be used is a so-called **USB A (Male) to Mini-USB A (Male) cable**. In case you don't have this type of cable, you can order it on www.safescan.com



- 2 If your PC runs Windows 7 or higher, your Safescan device should automatically be recognized (as "Prolific USB-to-Serial Comm Port"). This can be checked in the Windows Device Manager. If your computer does not recognize your Safescan device, you will see a yellow exclamation mark next to "USB-to-Serial Comm Port". In this case, please install the **device driver** for either Windows XP/Vista/7 or Windows 8/10 on your PC.



= OK



= DRIVER NEEDED

- To download the driver and installation instruction for **Windows XP / Vista / 7**, click [here](#)
- To download the driver and installation instruction for **Windows 8 / 10**, click [here](#)

INTRODUCTION AND PRECAUTIONS

- 3 Before updating your device, **please ensure that your device and the internal sensors have been properly cleaned and are free of dust.** Cleaning Cards are available at www.safescan.com. Dust is best removed using pressurized air, for example from an air-duster spray can.

GO TO THE UPDATE PROCEDURE



SOFTWARE UPDATE

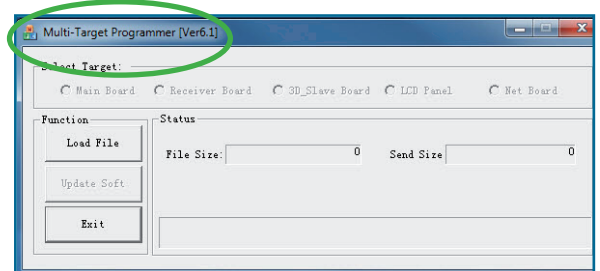
1. **Power off your Safescan 155i / 155-S Counterfeit Detector.**
2. Connect the Safescan 155i / 155-S to a PC with a Mini USB to USB cable (not included).



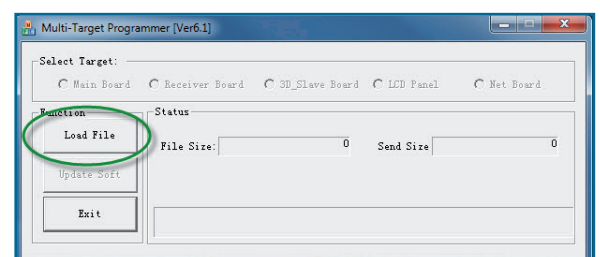
3. Connect the power adapter to the Safescan 155i / 155-S.
4. Press and hold **[MODE]** key (1), then press **[ON/OFF]** key (2) while still pressing the **[MODE]** key. The LED display shows **---** icons. This indicates the machine is in download mode. If the display does not show these icons please try again.



5. Open the software: **Multi Target Programmer (v6.1).exe**

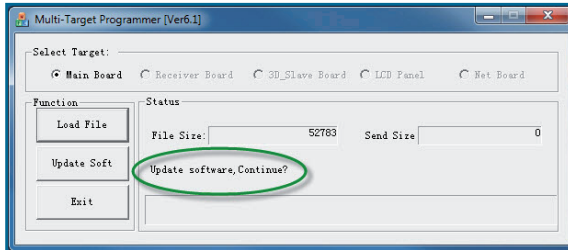


6. Click **[Load file]**.

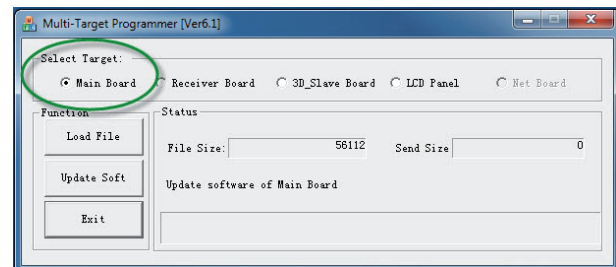
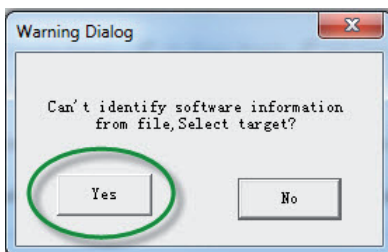


SOFTWARE UPDATE

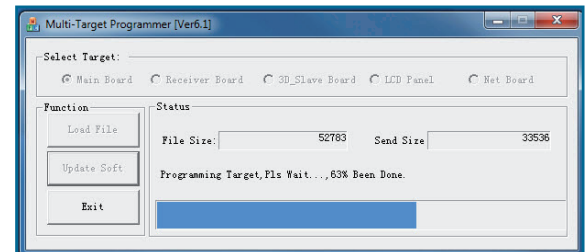
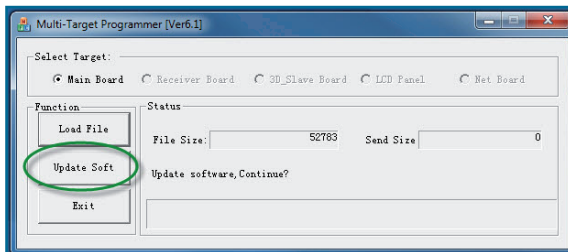
7. Browse to the location where you have placed the update files, and select the **update file (S155_Update_Sxx-xx.UPL)**.
8. The Programmer-software will automatically indicate that the main board software will be updated, and will ask you if you want to continue with the update.



9. If the message **[Can't identify software information from file. Select target?]** appears, click **[Yes]** and select **[Main Board]** in the Select Target bar.



10. Click **[Update Soft]** to upload the software to the device. The software will show a progress bar.

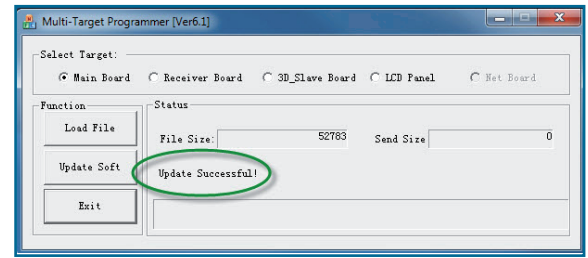


11. If the message **[Can't find any available devices]** appears, please install the driver for Windows XP/Vista/7 or Windows 8/10 on your PC and repeat the update procedure.

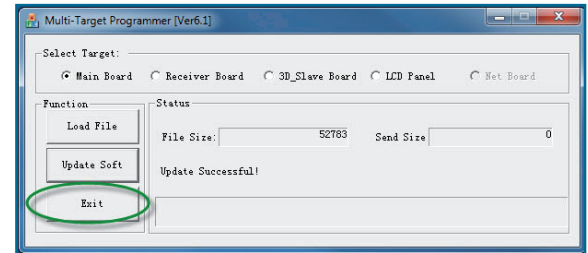
- To download the driver and installation instruction for **Windows XP / Vista / 7**, click [here](#)
- To download the driver and installation instruction for **Windows 8 / 10**, click [here](#)

SOFTWARE UPDATE

12. When the update has finished (100%), the Safescan 155i / 155-S will automatically switch off.



13. Close the software by pressing **[EXIT]**. Your Safescan counterfeit detector has now been updated.



UPDATE FINISHED